



Flat 1105 47, Kent Building Hope Street, London, E14 0QL
£946 Per week

 3  2  1  B

Exceptional three-bedroom penthouse apartment in the prestigious Kent Building, London City Island, offering over 1,300 sq ft internally plus a large private roof terrace.

Features include a bright open-plan living space with wraparound terrace, fully fitted modern kitchen, three generous double bedrooms, two bathrooms, separate utility room, electric curtains, installed mood lighting, and plenty of storage throughout. A standout private rooftop terrace of nearly 300 sq ft provides rare outdoor space with open views.

Residents enjoy 24-hour concierge, swimming pool, gym, and residents' lounge.

One of the best penthouses available in E14, early viewing advised.

*Photos have been digitally dressed for example purposes.

Council Tax Band: TBC

Minimum contract: 12 months

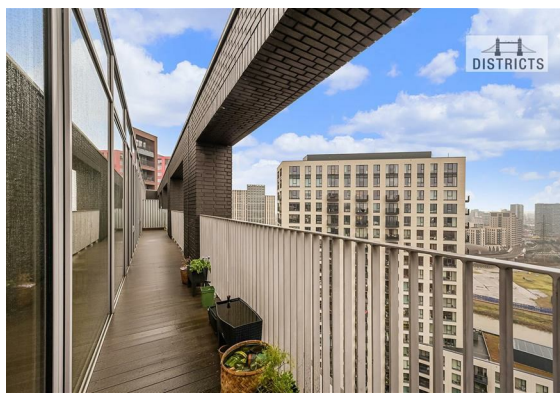
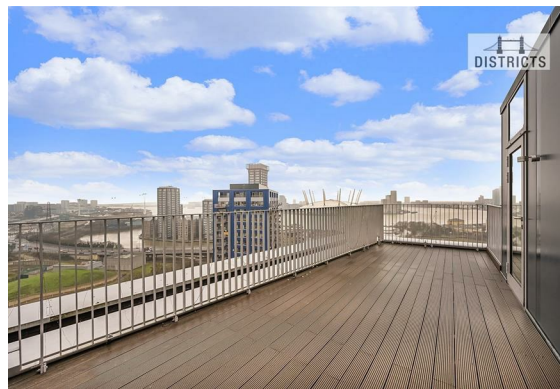
Change of contract fee: £50

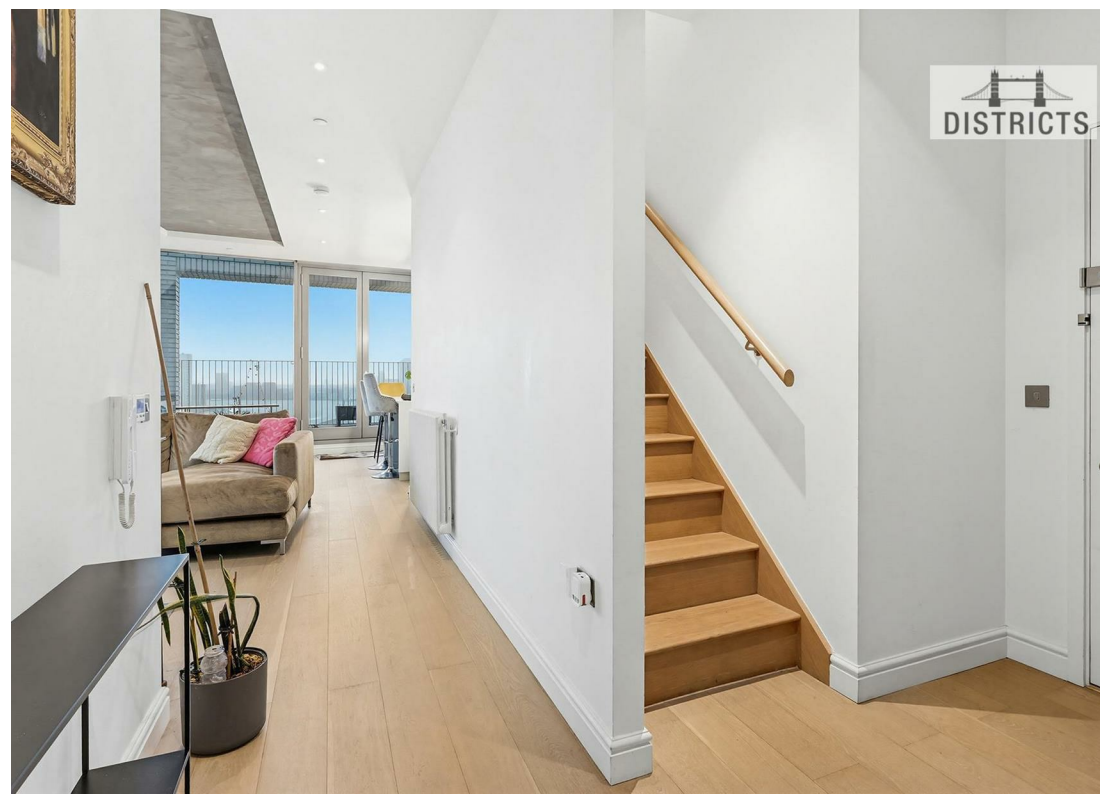
Holding Deposit - £946 - 1 weeks rent, subject to agreed offer.

Electricity supply – Mains | Heating, Hot Water – Communal supply | Water Supply & Sewerage – Mains | Lift Access

To check broadband and mobile phone coverage please visit Ofcom

To check planning permission please visit Tower Hamlets Council Website, Planning & Building Control







Energy Efficiency Rating		
	Current	Potential
Very energy efficient - lower running costs		
(92 plus) A		
(81-91) B	83	83
(69-80) C		
(55-68) D		
(39-54) E		
(21-38) F		
(1-20) G		
Not energy efficient - higher running costs		
England & Wales		EU Directive 2002/91/EC

These particulars, whilst believed to be accurate are set out as a general outline only for guidance and do not constitute any part of an offer or contract. Intending purchasers should not rely on them as statements of representation of fact, but must satisfy themselves by inspection or otherwise as to their accuracy. No person in this firm's employment has the authority to make or give any representation or warranty in respect of the property.